



Worcester Park Road, Worcester Park

The **PERSONAL** Agent



# £365,000

## Leasehold

- Two Double Bedrooms
- First Floor Maisonette
- 19ft Lounge / Dining Room
- Refitted Kitchen
- Refitted Bathroom
- 84ft Private Garden
- Walk to Shops & Station
- No Chain



This truly stunning two double bedroom first floor apartment is situated in one of the leafier parts of Worcester Park, within walking distance of shops and Tolworth railway station.

The property offers a 19ft lounge / dining room with windows at either end allowing in plenty of natural light.

Both bedrooms are generous size doubles, and the kitchen and bathroom have been refitted to a high standard.

To the rear of the property is a fantastic private garden measuring over 84ft in length which is extremely rare feature for this type of home.

Early viewing highly recommended by sole agents.

Worcester Park offers a large choice of amenities including a Waitrose, banks/building societies and other essential stores, as well as a variety of restaurants, with Kingston just a short drive away offering a more comprehensive range of shops. Worcester Park also offers great access to public transport.

Tenure - Leasehold

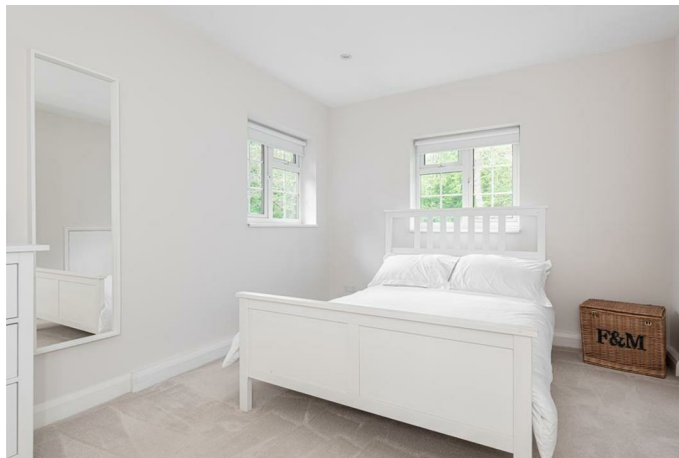
Length of lease (years remaining) - 85

Annual ground rent amount (£) - 10.00

Annual service charge amount (£) - TBC

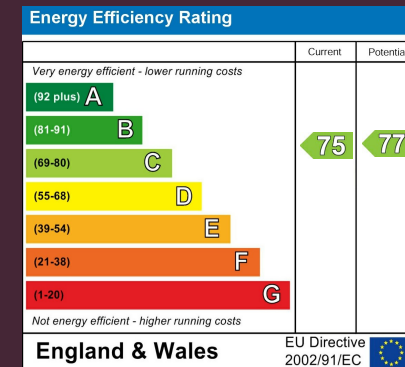
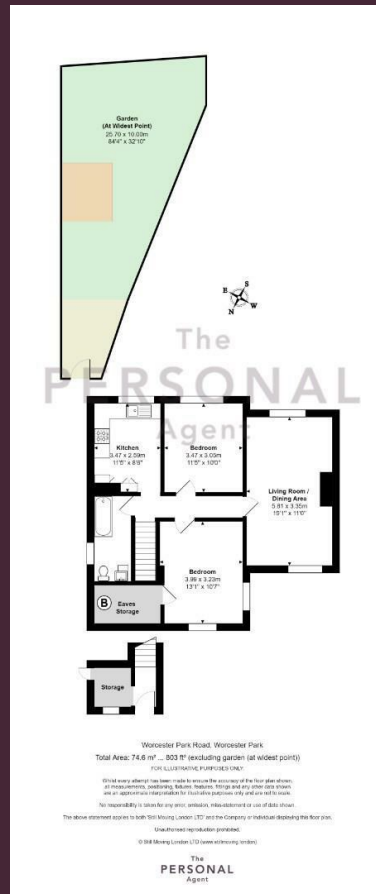
Council tax band - C

PLEASE NOTE: Whilst we believe the information above to be correct, we are unable to guarantee this information until such time as we have formally verified it with the sellers. Therefore you are advised to clarify any information with your chosen legal representative before proceeding with the purchase of this property.









**EPSOM OFFICE**  
2 West Street  
Epsom, Surrey, KT18 7RG  
01372 745 850

**STONELEIGH/EWELL OFFICE**  
62 Stoneleigh Broadway  
Stoneleigh, Surrey, KT17 2HS  
020 8393 9411

**BANSTEAD OFFICE**  
141 High Street  
Banstead, Surrey, SM7 2NS  
01737 333699

**LETTINGS & MANAGEMENT**  
163 High Street  
Epsom, Surrey, KT19 8EW  
01372 726 666



The Personal Agent Ltd. Registered office: 2A Boston Rd, Henley-on-Thames RG9 1DY.  
Registered in England No. 4398817.



The  
**PERSONAL**  
Agent

**Please Note:** Whilst every attempt has been made to ensure the accuracy of the floorplans contained here, measurements of doors, windows and room areas are approximate and no responsibility is taken for any error, omission or mis-statement. These plans are for representation purposes only and should be used as such by and prospective purchaser. The services, systems and appliances listed in the specification have not been tested by The Personal Agent and no guarantee as to their operating ability or their efficiency can be given. All images and text used to advertise our properties are for the sole use of The Personal Agent Ltd.



